

## 13q Subtelomere FISH Probe (RASA3)

### Introduction

The Chromosome 13q Subtelomere FISH Probe is designed to detect presence, integrity and copy number of 13q subtelomeric chromosomal regions.

### Intended Use

To measure chromosome 13 copy number and presence of the intact human 13q subtelomeric chromosomal regions.

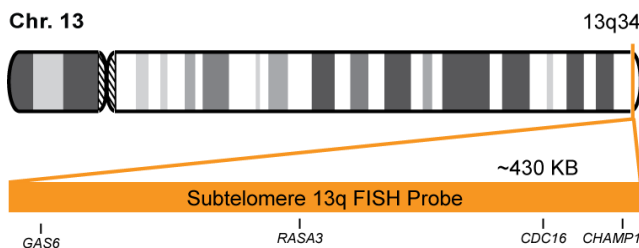
### Cont.

13q Subtelomere (RASA3) FISH Probe

### Color

CytoOrange

### Probe Design



STP 13q FISH Probe covers a subtelomeric chromosomal region within locus 13q34.

Not to Scale

### Cat. No.

CT-STP13Q-10-O

### Volume

10 Tests (100 µL)

### Signal Pattern Interpretation

#### Normal Patterns

20

#### Abnormal Patterns

Other Patterns

- 1) O'Connor C. *Nature Education*. 1(1):171 (2008).
- 2) Tsuchiya KD. *Clin Lab Med*. 31(4):525-42 (2011).
- 3) Ried T, et al. *Hum Mol Genet*. 7(10):1619-26 (1998).
- 4) Knight SJ & Flint J. *J Med Genet*. 37(6):401-9 (2000).
- 5) Jalal SM, et al. *Genet Med*. 5(1):28-34 (2003).

\* CE IVD only available in certain countries. All other countries are either ASR or RUO. Please contact your local dealer or our headquarters for more information.

DCN032

© CytoTest Inc.

www.cytotest.com



CytoTest Inc.  
1395 Piccard Drive, Suite 308  
Rockville, MD 20850, USA

V2016.06.01

T-07-10-STP13Q-O-EN