

12q Subtelomere FISH Probe (CHFR)

Introduction

The Chromosome 12q Subtelomere FISH Probe is designed to detect presence, integrity and copy number of 12q subtelomeric chromosomal regions.

Intended Use

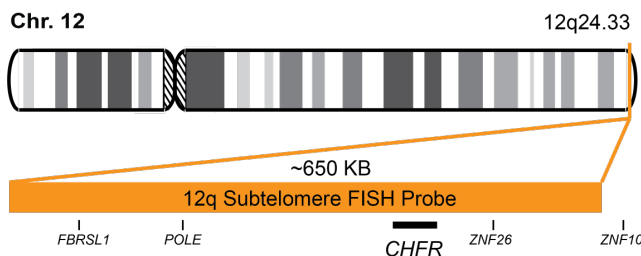
To measure chromosome 12 copy number and presence of the intact human 12q subtelomeric chromosomal regions.

Cont.

Color

12q Subtelomere (CHFR) FISH Probe CytoOrange

Probe Design



STP 12q FISH Probe covers a subtelomeric chromosomal region within locus 12q24.33.

Not to Scale

Cat. No.

Volume

CT-STP12Q-10-O

10 Tests (100 µL)

Signal Pattern Interpretation

Normal Patterns

20

Abnormal Patterns

Other Patterns

- 1) O'Connor C. *Nature Education*. 1(1):171 (2008).
- 2) Tsuchiya KD. *Clin Lab Med*. 31(4):525-42 (2011).
- 3) Ried T, et al. *Hum Mol Genet*. 7(10):1619-26 (1998).
- 4) Knight SJ & Flint J. *J Med Genet*. 37(6):401-9 (2000).
- 5) Jalal SM, et al. *Genet Med*. 5(1):28-34 (2003).

* CE IVD only available in certain countries. All other countries are either ASR or RUO. Please contact your local dealer or our headquarters for more information.

DCN032

© CytoTest Inc.



CytoTest Inc.
1395 Piccard Drive, Suite 308
Rockville, MD 20850, USA