

ARHGAP39/CCP8 FISH Probe Kit

Introduction

The ARHGAP39/CCP8 FISH Probe Kit is designed to detect the human ARHGAP39 gene located on chromosome band 8q24.3, along with the number of chromosome 8 copies per cell. Mutations in ARHGAP39 – also known as CrGAP or Vilse – are associated with a variety of cancers including breast, hepatocellular, prostate and other malignancies.

Intended Use

To measure the copy number of the human *ARHGAP39* gene located on chromosome band 8q24.3.

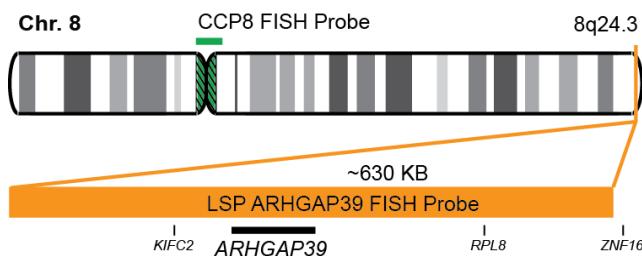
Cont.

Color

LSP ARHGAP39 FISH Probe
CCP8 FISH Probe

CytoOrange
CytoGreen

Probe Design



Not to Scale

LSP ARHGAP39 FISH Probe covers a chromosomal region which includes the *ARHGAP39* gene. CCP8 FISH Probe is designed to serve as a control to determine the number of chromosome 8 copies per cell.

Cat. No.

Volume

CT-PAC270-10-OG

10 Tests (100 µL)

Signal Pattern Interpretation

Normal Patterns

202G

Abnormal Patterns

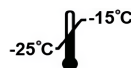
Other Patterns

- 1) Yao L, et al. *BMC Cancer*. 23(1):440 (2023).
- 2) Ding Y, et al. *Aging (Albany NY)*. 15(7):2631-2666 (2023).
- 3) Lim J, et al. *Curr Biol*. 24(7):786-92 (2014).
- 4) Fei T, et al. *Proc Natl Acad Sci U S A*. 114(26):E5207-E5215 (2017).
- 5) Huttlin EL, et al. *Nature*. 545(7655):505-509 (2017).

* CE IVD only available in certain countries. All other countries are either ASR or RUO. Please contact your local dealer or our headquarters for more information.

DCN032

© CytoTest Inc.



CytoTest Inc.
1395 Piccard Drive, Suite 308
Rockville, MD 20850, USA